

## Automated Testing with Mercury Interactive Testing Tools

### The Client

The Client is a part of the Group of Companies – the United Kingdom’s largest independent applications software products company that provides information systems that serve the Health Care, Banking and Insurance Markets. Client’s products have been supplied to over 1,200 Hospitals, 85,000 Physicians and 600 Home Care Providers with Clinical Department, Practice Management, E-Commerce and Home Health Solutions.

### The Challenge

To generate Quality Automated Test Scripts for the applications developed in MF COBOL and Visual Basic using Automated Testing Tools WinRunner, TestDirector and LoadRunner. The product needs continuous upgradation which results in releasing revised versions to meet the growing needs of the huge clientele.

### Scope of the Project

- Quality Assurance Through Automated Testing
- Dedicated Testing Lab Facility to Run the Test Cases for the Applications Developed in MF COBOL and Visual Basic

### Project Approach

- Preparation of Test Plan and Test Cases
- Identification of Testing Tools
- Generation of Test Scripts
- Preparation of Test Results

### Project Team

- On-Site Project Manager
- Off-Shore Testing Team

### The Solution

Softima has set up an Off-Shore Testing Lab Facility for the Client to support their Quality Assurance through Automated Testing. Entire testing activity is monitored by a central server with access to the Client to review the Test Results generated at the Off-Shore Testing Lab.

Quality Assurance Testing Process:

- Initially all the Test Plan and Test Cases are reviewed with respect to FDS and various test methodologies (e.g. BVA, Equivalence Partitioning etc.)
- Test Scripts are generated for individual Test Cases
- Integration Testing with various Application Modules
- All the Test Scripts are tested on Different Windows Environments
- All the Test Reports are placed in a Common Repository

#### Advantages

- Easy Verification of Data Integrity
- Reusable Test Scripts
- Multiple Environments Support
- Multiple Verification Types
- Dedicated Testing Team

#### Domain

- Health Care

#### Technology

- WinRunner, LoadRunner and TestDirector

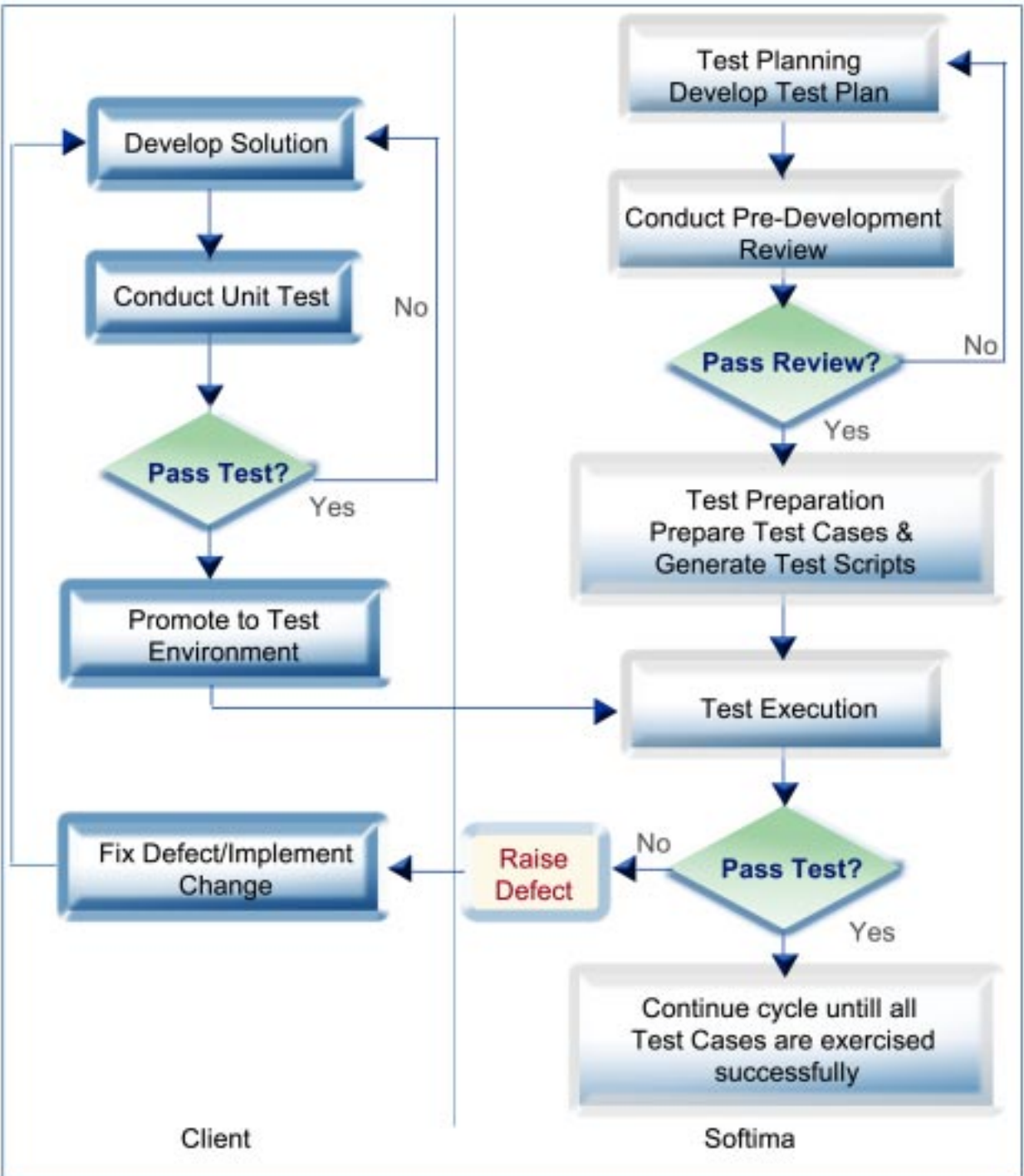
#### Project Type

- Quality Assurance Testing

**S**oftima's  
Software  
Solutions  
for  
Health Care  
Industry

Automated Testing with Mercury Interactive Testing Tools

Quality Assurance Testing Process



- Softima Offerings**
- On-Site Consultancy
  - Off-Site Consultancy
  - Off-Shore Consultancy
  - Project Management
  - Contract Programming

- Solutions**
- B2B/EAI Integration
  - IT-Enabled Solutions
  - Re-Engineering
  - Porting and Migration
  - Internet/Intranet Applications
  - e-Business
  - Client/Server Applications
  - Legacy Applications
  - Quality Assurance Testing

*Softima*

**Softima, Inc.**  
 3030 LBJ Freeway, Suite 220  
 Dallas, TX 75234  
 Phone: (972) 484-4574  
 Fax: (972) 484-4327  
<http://www.softima.com>

**India Softima Services Pvt Ltd.**  
 201, Manjeera Square, Ameerpet  
 Hyderabad-500 038, AP. India  
 Phone: +91-40-2375 0555  
 Fax: +91-40-2375 0651  
<http://india.softima.com>

**Softima (S) Pte Ltd.**  
 17 Phillip Street #05-02  
 Grand Building  
 Singapore 048695  
 Phone: (65) 6352 0193  
<http://singapore.softima.com>

**Softima's  
 Software  
 Solutions  
 for  
 Health Care  
 Industry**